

Grafix Wall Art

Customised art for your home or office

APPLYING YOUR WALL DECAL

You will need: masking tape, squeegee, sharp scissors, and a builders level

Your decal comes in 3 pieces.

- * Top clear application tape
- * Coloured vinyl decal
- * Silicon release backing paper



1. Clean the area where the decal will be installed. Ensure it is completely dry before continuing. You will need to wait 4 weeks after painting your wall before applying your decal.



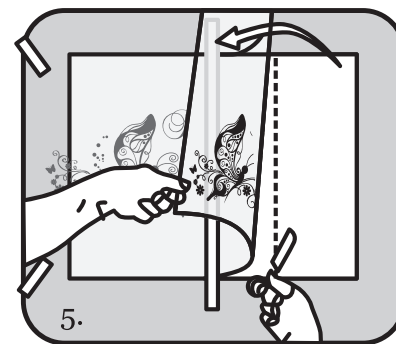
2. Using the squeegee provided, rub firmly across the top of the decal to ensure the decal is sticking to the Application tape



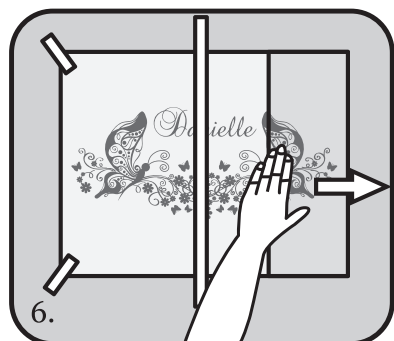
3. Apply masking tape to the corners when you want it positioned on the wall. Use a level to ensure wording is straight.



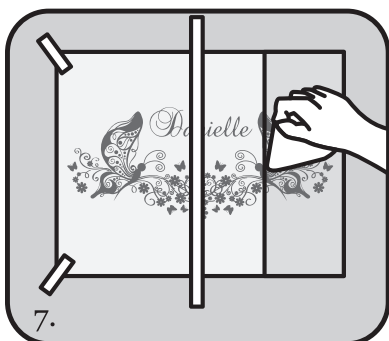
4. Apply a long piece of masking tape across the middle of your decal an onto the wall either side. This can be either horizontal or vertical depending on your decal.



5. Remove the tape from the corners and peel back the top application tape from the backing paper ensuring the decal is lifted away with it. Cut away the exposed backing paper.



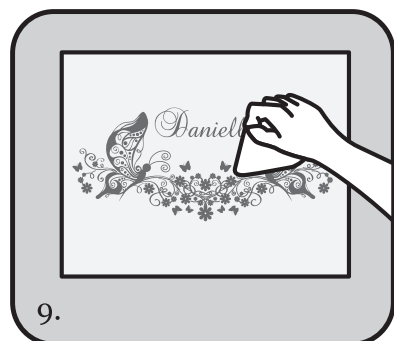
6. Lightly press the decal onto the wall starting from the middle working outwards.



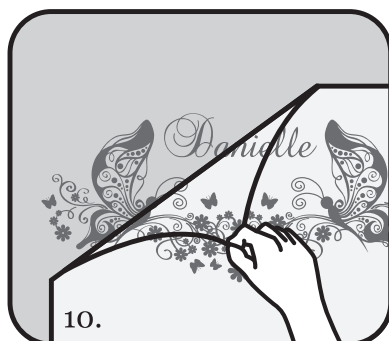
7. Using your squeegee, now firmly rub over the application tape paying particular attention where the decal is.



8. Remove the middle strip of masking and the other two corner pieces. Lift the decal up & pull the remaining backing paper from behind. Rubbing it lightly onto the wall from the middle out as you go.



9. Firmly squeegee the entire area.



10. Starting from the top corner, pull back the top application tape from the wall at a 180° angle ensuring the decal remains on wall.



11. Lightly wipe over the decal and squeeze out any air bubbles. You can use a pin to help here. Enjoy your work of art!